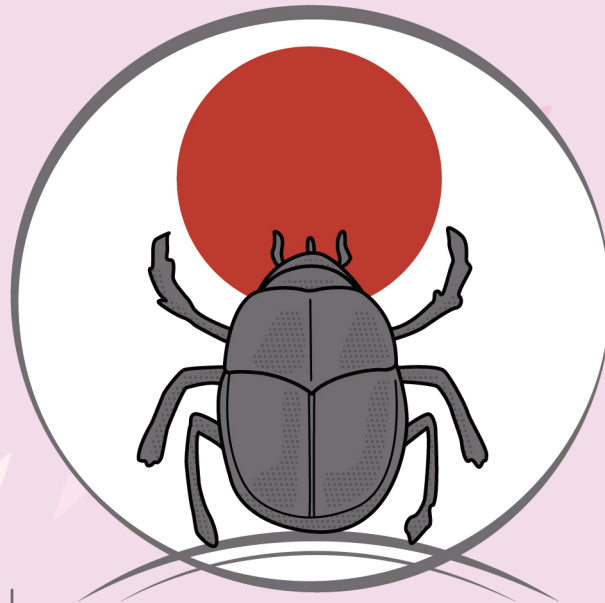


26th
CURRENT RESEARCH IN EGYPTOLOGY
11-15 July



TOKYO
2026



2nd circular



Table of Contents

Organising Committee	2
Scientific Committee	3
Supporters	4
Venue	5
Internet	6
Preliminary Programme	6
Presentation Formats	7
Museum Visits	8
Conference Dinner	9
Excursion	10
Registration	11-12
Immigration	13
Visas	13
Travel Advice & Information	14
Accommodation	15-16



Organising Committee

CRE 26 Tokyo 2026 is organised by a collaborative team of doctoral students, postdoctoral researchers, and early-career researchers based in Japan, rather than by a single university or institution.

- Tokihisa Higo, University of Tsukuba.
- So Miyagawa, University of Tsukuba.
- Seria Takenouchi (Yamazaki), Waseda University.
- Taichi Kuronuma, Tokyo University of Foreign Studies.
- Keita Takenouchi, Waseda University.
- Ayano Yamada, Tokyo National Research Institute for Cultural Properties.
- Marina Shimizu, Freie Universität Berlin; Nagoya University.
- Mutsumi Okabe, Kanazawa University.
- Mizuki Shindo, Kanazawa University.
- Yuka Ito, Okayama Orient Museum; Waseda University.
- Ayame Miyamoto, Hiroshima University.
- Miona Miyazaki, Waseda University.
- Shinichi Kato, University of Tsukuba.
- Haruko Kono, Tokai University.
- Rikiya Sato, Nagoya University.

You can find more information about each committee member by checking out the [Current Research in Egyptology website](#).



Scientific Committee

- Yoshinari Abe
- Jose Manuel Alba Gómez
- Susanne Bickel
- Andrew Connor
- Jennifer Cromwell
- Huw T. Davies
- Marleen De Meyer
- Camilla Di Biase-Dyson
- Grazia Di Pietro
- Silvia Einaudi
- Nobuyuki Fuji
- Maria Carmela Gatto
- Carlos Gracia Zamacona
- Aleksandra Hallmann
- Julia Hamilton
- Tom Hardwick
- Ben J. Haring
- Daisuke Igarashi
- Robert Kade
- Olaf E. Kaper
- Katarzyna Kapiec
- Nozomu Kawai
- Marwan Kilani
- Jaromír Krejčí
- Robert Kuhn
- Uroš Matić
- Toshiya Matsui
- Gianluca Miniaci
- Antonio J. Morales
- Vincent Morel
- Matthias Müller
- Miriam Müller
- Martin Odler
- Takuzo Onozuka
- Marzena A. Ozarek-Szilke
- Paweł L. Polkowski
- Joachim Quack
- Carlo Rindi Nuzzolo
- Tsubasa Sakamoto
- Daniel Soliman
- Toon Sykora
- Kazumitsu Takahashi
- Ryosuke Takahashi
- Filip Taterka
- Keiko Tazawa
- Emily Teeter
- Sami Uljas
- Koichiro Wada



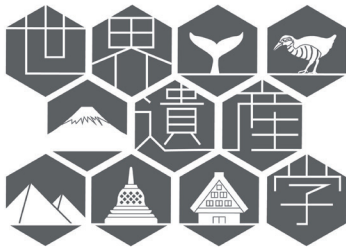
Supporters



古代オリエント博物館
The Ancient Orient Museum, Tokyo



早稲田大学エジプト学研究所
Institute of Egyptology, Waseda University



HERITAGE STUDIES DEGREE PROGRAM
UNIVERSITY OF TSUKUBA

More partner institutions coming soon.



Venue

All keynote lectures and conference presentations will take place at the [National Research Institute for Cultural Properties, Tokyo](#),

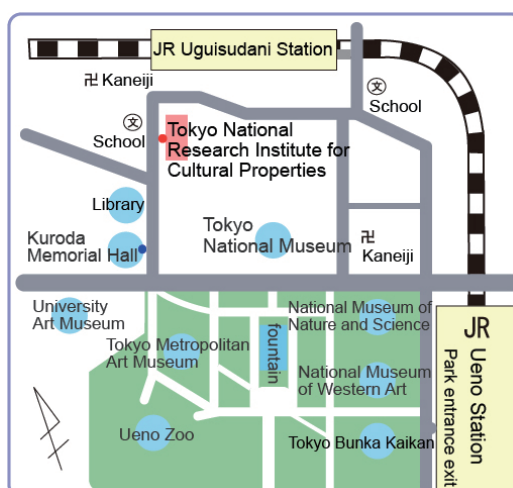
13-43 Ueno Park, Taito-ku, Tokyo ([Google Map](#))

This venue is located near Ueno Park and is accessible from several major train and subway lines.

Conference presentations will be held in three lecture rooms within the venue. Poster presentations will be held in designated common areas, providing central spaces for presenting and discussing research during the scheduled poster sessions.

The conference will take place on the basement level, and elevators are available.

If you have any questions regarding the venue, please contact the Organising Committee at: tokyo.cre2026@gmail.com Please refrain from contacting the Institute directly.

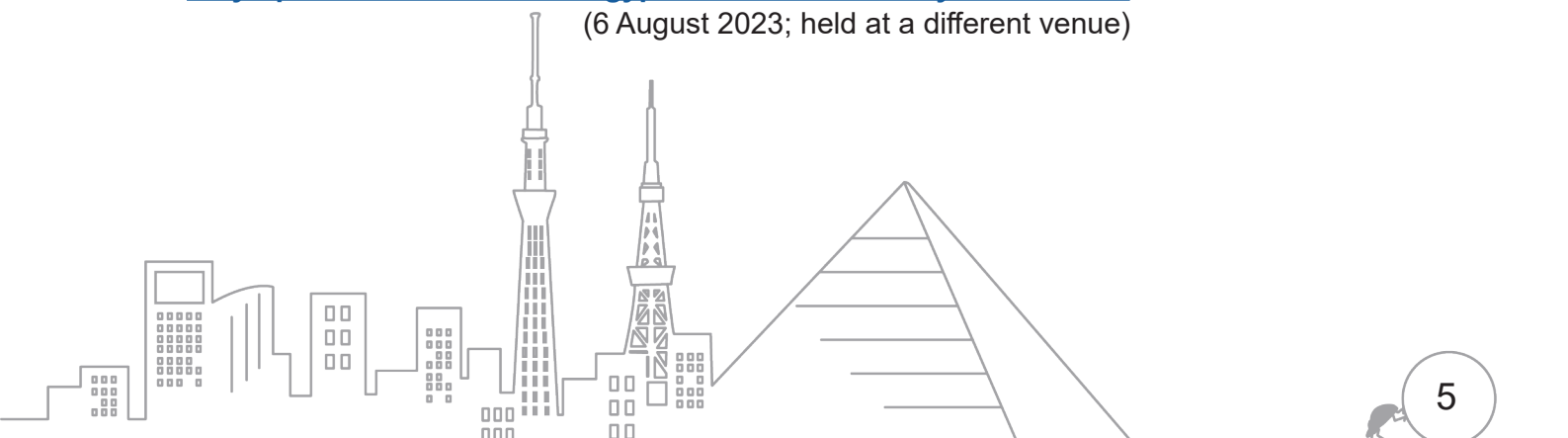


- Access**
- ◆ JR Yamanote Line: 7-minute walk from Uguisudani Station (South Exit; 0.7 km)
 - ◆ JR Yamanote Line: 13-minute walk from Ueno Station (Park Exit; 1.1 km)
 - ◆ Tokyo Metro Ginza Line / Hibiya Line: 18-minute walk from Ueno Station (1.5 km)

Activities of TOBUNKEN

A symposium on the Grand Egyptian Museum held by TOBUNKEN

(6 August 2023; held at a different venue)



Internet

Visitor Wi-Fi will be available at the National Research Institute for Cultural Properties, Tokyo. Access details will be included in the materials distributed on the day.

Preliminary Programme

	11.07.2026 Saturday	12.07.2026 Sunday	13.07.2026 Monday	14.07.2026 Tuesday	15.07.2027 Wednesday		
9:00		Registration			Excursion		
9:30		Presentations	Presentations	Presentations			
10:00							
10:30							
11:00	Registration					Coffee Break	Coffee Break
11:30		Presentations	Presentations	Coffee Break			
12:00							
12:30				Presentations		Lunch Break	Lunch Break
13:00							
13:30	Opening Ceremony	Lunch Break	Lunch Break				
14:00							
14:30				Presentations		Short Presentations	Short Presentations
15:00							
15:30	Coffee Break	Coffee Break	Poster Sessions				
16:00	Coffee Break	Poster Sessions	Keynote 4				
16:30	Keynote 1	Keynote 2	Short Presentations	Coffee Break			
17:00				Keynote 3		Closing	CRE General Meeting
17:30							
18:00							
18:30							
19:00	Museum Tour at The Ancient Orient Museum	Conference Dinner					
19:30							
20:00							
20:30							
21:00							
21:30							
22:00							

*Please note that session locations are provisional. Final details will be confirmed and published in subsequent updates, once all arrangements have been finalised.

Presentation Formats



20-minute standard presentations

- Standard presentations are 20-minutes followed by a 5-minute question and answer session.
- At the end of each presentation, there will be a 5-minute break to allow for conference participants to move between rooms.
- There will be four parallel sessions taking place, with each session lasting 1-2 hours, followed by a longer break.



10-minute short presentations

- Short presentations are 10-minutes long, and will take place during dedicated sessions.
- These presentations will be presented in a series of six consecutive talks followed by a break.



Posters

- Posters must be printed in A0 size, portrait orientation (1189 x 841 mm).
- Posters must have a vertical orientation.
- A poster must contain:
 - The presenter's name.
 - The presenter's affiliate institution.
 - The presenter's contact details.
- Additional design choices are at the discretion of the presenters.
- Only in cases where poster presenters are unable to attend due to unavoidable circumstances, we may exceptionally allow the poster to be displayed, provided that the registration fee and the cost of printing the poster have been paid in advance.



Museum Visits

An official mini-tour to [The Ancient Orient Museum, Tokyo](#) in Ikebukuro will be organised on Sunday, 12 July. The museum houses important collections from West Asian (Near Eastern) archaeological sites, including artefacts from ancient Egypt. The group will depart from the conference venue at the end of the day's programme. The participation fee is included in the registration fee (excluding transportation between the conference venue and the museum). Advance registration is required at the conference venue.



Conference Dinner

Location: [MY Shokudo Dining & Sakaba](#)

3F, TOKYO TORCH Terrace, 2-6-4 Otemachi, Chiyoda City, Tokyo 100-0004

Date: Monday, 13 July

Time: 7:00pm-9:00pm

Price per person: JPY 10,000



My Shokudo Dining & Sakaba is a beautiful restaurant located near Tokyo Station. Please take the JR Yamanote or Keihin-Tohoku Line from Ueno Station to Tokyo Station (approx. 6 minutes). At Tokyo Station, exit via the Nihonbashi Exit and walk toward TOKYO TORCH Terrace (approx. 5 minutes). The restaurant is located on the 3rd floor.

The conference dinner will be served buffet-style, with drinks included.

For more information about the restaurant, please check out [My Shokudo Dining & Sakaba](#)'s website.

The conference dinner can be booked together with the registration and excursion fees on the Registration Form. Attendance is optional.



Excursion

An excursion to Kamakura and Enoshima Island which are situated to the south of Tokyo (Kanagawa Prefecture) will be organised on Wednesday, 15 July (Fifth day of the conference). Kamakura is a historic coastal city that served as the political centre of the Kamakura Shogunate in the early medieval period (late twelfth to early fourteenth centuries CE). Enoshima Island is a well-known sightseeing destination, offering a striking coastal landscape in Sagami Bay on the Pacific Ocean. Participation in the excursion is optional. The group will depart from Tokyo Station at 09:00 AM and arrive in Kamakura at approximately 10:30 AM. We plan to travel by chartered bus. The participation fee will be shown when you register.

Kamakura

Kamakura contains numerous historic sites of cultural significance. The excursion will include visits to major landmarks such as Tsurugaoka Hachimangū Shrine, the Great Buddha of Kamakura, and Hase-dera Temple. Time at leisure in the town centre will also be provided.

Further information on Kamakura can be found at: <https://visit.trip-kamakura.com>

Enoshima

Although a small island, Enoshima offers several notable attractions, including Enoshima Shrine and the Enoshima Caves, as well as panoramic views of the Pacific Ocean and Mt. Fuji.

Great Buddha

Japanese Shinto Shrine

CRE 26 Tokyo_Excursion_15 July

Feel Japanese History and Culture

KAMAKURA

&

ENOSHIMA ISLAND

Old capital city in the 13th century

Beautiful view of Mt. Fuji

Popular tourist spot
Fresh seafood and local food

1.5 hours from Tokyo

Pre-registration is required: 8,000 yen

UNIVERSITY OF TOKYO

Registration

Registration is now open for CRE 2026.

You can register online by completing the [Conference Registration Form](#) after making your payment.

Prices:

Registration Category	Fee
Early registration (until 31 May 2026):	JPY 8,000
Late registration (until 1 July 2026)	JPY 10,000
Conference Dinner	JPY 10,000
Excursion	JPY 8,000

Registration fees must be paid by Wise or bank transfer. All payments must be made in Japanese yen (¥, JPY). Please note that any bank or transfer fees must be covered by the sender.

The registration fee covers:

- Attendance at all keynote lectures and conference sessions
- Opening drinks reception
- Conference welcome pack
- Museum tour (train ticket not included)



Registration (Continued)

Wise Information

When paying via Wise, please use one of the following links or QR codes:

- ① [Early Registration](#): JPY 8,000
- ② [Early Registration + Conference Dinner](#): JPY 18,000
- ③ [Early Registration + Excursion](#) : JPY 16,000
- ④ [Early Registration + Conference Dinner + Excursion](#): JPY 26,000

*Please make sure to complete the transfer process after adding funds to your Wise account. Simply adding funds does not constitute a completed payment.



①



②



③



④

*Please make sure to complete the transfer process after adding funds to your Wise account. Simply adding funds does not constitute a completed payment.

Bank Transfer

Our bank details are as follows:

Beneficiary Bank: MUFG BANK,LTD.

Branch Name: Takatanobaba Branch

Branch Address: 3-2-3, Takadanobaba, Shinjuku-ku, Tokyo, Japan

SWIFT code /BIC code: BOTKJPJT

(If an 11-digit SWIFT/BIC is required: BOTKJPJTXXX)

Account Number: 053-2384351

Account Name: CRE Japan Committee Chairperson Tokihisa Higo

Account Address: 305 Connect-Midorino, 17-4, Midorino 2-chome, Tsukuba, Ibaraki, 3050881, Japan

***Please don't forget to indicate to your bank that all bank transfer fees are to be charged to the sender.**

Please also note that international bank transfer fees can be quite high. We therefore recommend using Wise as a more cost-effective payment method where possible.



Immigration

All participants are strongly recommended to complete immigration and customs procedures via the [Visit Japan Web](#) system prior to arrival in Japan, in order to avoid potential delays or complications during entry procedures.

Visas

Participants travelling to Japan from outside the country may require a valid visa. Visa requirements depend on nationality, residence status, and the purpose of travel. Participants are responsible for confirming whether they require a visa and for completing the necessary application procedures following the steps below.

General information on Japanese visa requirements is available from the [Ministry of Foreign Affairs of Japan](#).

Step 1: Please check whether your nationality is on the list of [visa-exempt countries](#).

If included, no visa application is required.

Step 2: If not, find your nationality and confirm the applicable conditions:

[China](#),

[Russia](#),

[CIS countries, Ukraine and Georgia](#),

[All other nationalities](#)

For further steps: See the link to [Visa Requirements- Step by Step](#).

As a general rule, Egyptian passport holders and individuals receiving financial assistance from the organizers are required to obtain a short-term business visa (Visa Requirements Step by Step, Step 5).

Visa Support Contact

visa.cre2026@gmail.com

If you have any questions regarding visa procedures, please do not hesitate to contact us. We are pleased to assist you with your travel arrangements to Japan.

Travel Advice & Information

◆ Access to Ueno from Haneda and Narita Airports



Ueno is easily accessible from both airports. From Haneda Airport, take the Tokyo Monorail to Hamamatsucho and transfer to the JR line. From Narita Airport, take the Keisei Skyliner directly to Keisei-Ueno Station.

◆ [Welcome Suica](#) (Transit IC card)



For short-term visitors to Japan, one convenient option is Welcome Suica, a prepaid IC card that can be used on trains, buses, and at many participating shops. It does not require a deposit, is valid for 28 days including the date of purchase, and is generally non-refundable. Welcome Suica can be purchased from Welcome Suica ticket vending machines at [Narita Airport Terminal 1 Station](#), [Narita Airport Terminal 2, 3 Station](#), and Haneda Airport Terminal 3 (Tokyo Monorail) Station, as well as at selected JR EAST Travel Service Centers, JAPAN RAIL CAFÉ TOKYO, and the TAKANAWA GATEWAY Travel Service Center. In principle, only one card may be sold per person. You can top it up with cash, up to a maximum balance of 20,000 yen, at ticket machines, fare adjustment machines, and Seven Bank ATMs.

Railway Access Map (Central Tokyo)

Legend	
	Marunouchi Line Station
	Yamanote Line Station
*Travel times shown in parentheses are approximate times from each station to Ueno.	



Accommodation

A range of accommodation options is available in central Tokyo, particularly along the Tokyo Metro Marunouchi Line and JR Yamanote Line, which provide convenient access to the National Research Institute for Cultural Properties. The conference venue is most easily reached from Ueno Station or Uguisudani Station on the JR Yamanote Line, and Tokyo Station is also conveniently located for access to the venue.

For this reason, participants are encouraged to consider accommodation near other stations on the JR Yamanote Line or Tokyo Metro Marunouchi Line. In particular, areas around stations between Ueno – Tokyo – Shinjuku are especially practical for conference participants. These areas are well connected by public transport and offer a wide selection of hotels at various price ranges, including business hotels with multiple locations.

Access Map & Hotel Options

JR Yamanote Line

	<p>上野/Ueno Conference Venue</p>	<p>APA Hotel Ueno Ekikita ; APA Hotel Ueno Ekimae; APA Hotel Ueno Ekiminami ; Super Hotel JR Ueno Station Iriya Exit ; Hotel Sunroute “Stellar” Ueno</p>
	<p>御徒町/Okachimachi</p>	<p>APA Hotel Ueno Okachimachi Ekimae Minami ; Super Hotel Ueno Okachimachi</p>
	<p>秋葉原/Akihabara</p>	<p>APA Hotel Akihabara Ekimae ; APA Hotel Akihabara Ekihigashi ; APA Hotel Akihabara Ekikita ; Super Hotel Premier Akihabara</p>
	<p>神田/Kanda</p>	<p>Nine Hours Woman Kanda (*woman only) ; APA Hotel Kanda Ekimae ; APA Hotel Kanda Ekihigashi ; Dormy Inn Premium Kanda ; Sotetsu Fresa Inn Tokyo-Kanda</p>



Access Map & Hotel Options

Tokyo Metro Marunouchi Line


M 08	新宿/Shinjuku	APA Hotel Shinjuku-Kabukicho Tower ; Hotel Gracery Shinjuku ; APA Hotel Shinjuku-Kabukicho-Chuo ; Hotel Sunroute Plaza Shinjuku
M 13	赤坂見附/Akasaka-mitsuke	APA Hotel Akasakamitsuke ; Sotetsu Fresa Inn Tokyo-Akasaka
M 16	銀座/Ginza	Hotel Gracery Ginza ; Sotetsu Fresa Inn Ginza- 3 chōme ; Sotetsu Fresa Inn Ginza- 7 chōme ; Hotel Sunroute Ginza ; Mitsui Garden Hotel Ginza Premier
M 17	東京/Tokyo	Mitsui Garden Hotel Kyobashi
M 18	大手町/Otemachi	Sotetsu Fresa Inn Kanda-Otemachi ; Mitsui Garden Hotel Otemachi
M 20	御茶ノ水/Ochanomizu	APA Hotel Ochanomizu Ekikita ; Sotetsu Fresa Inn Ochanomizu-Jimbocho
M 25	池袋/Ikebukuro	APA Hotel Ikebukuro Eki Kitaguchi ; Sakura Hotel Ikebukuro ; Dormy Inn Ikebukuro ; Hotel Metropolitan Tokyo Ikebukuro



26th Current Research in Egyptology

Tokyo, 11-15 July 2026

 <https://cre26.tokyo/>

 tokyo.cre2026@gmail.com

 visa.cre2026@gmail.com

